

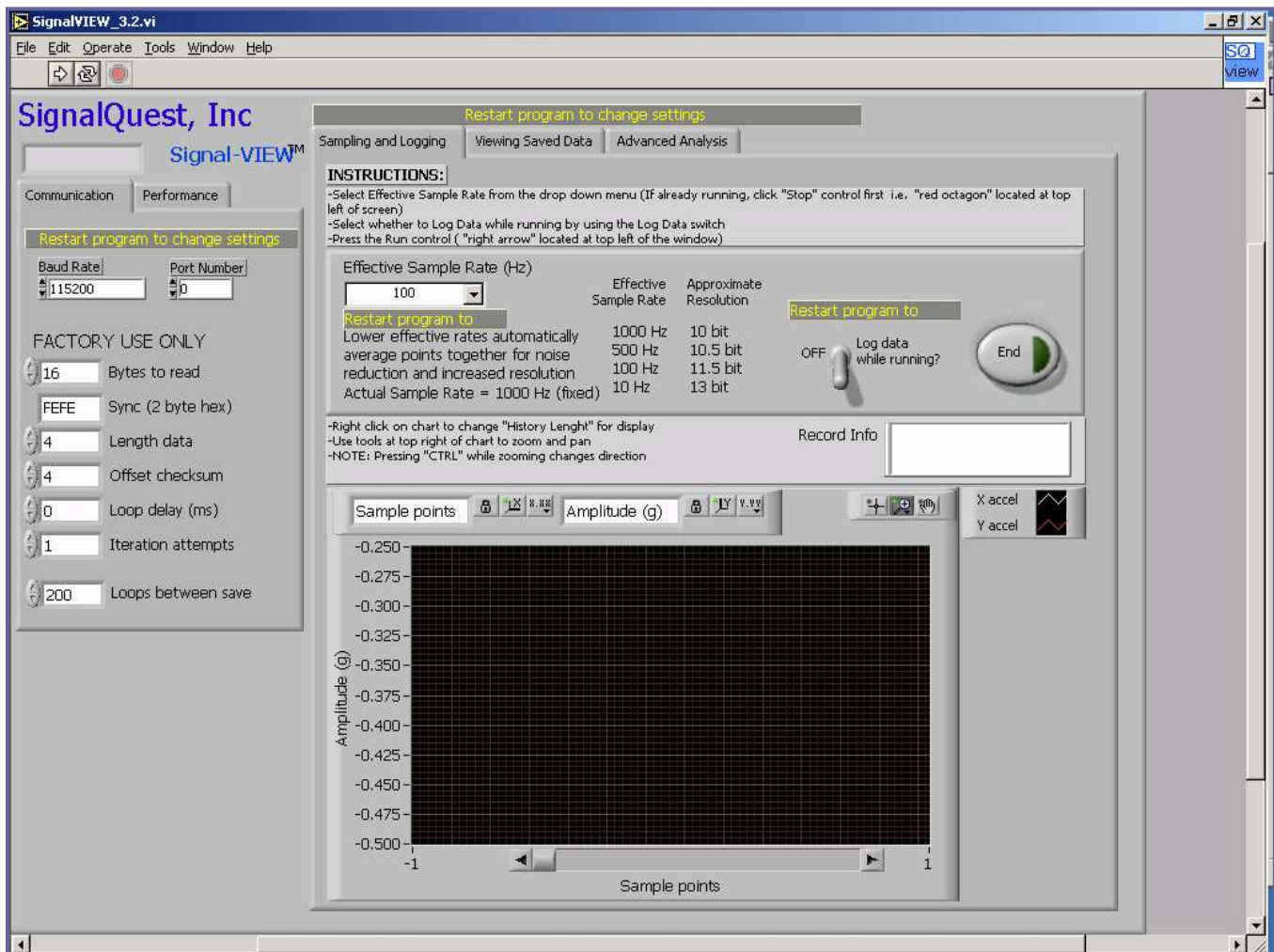
SIGNALVIEW SOFTWARE BASIC

► Overview

- The SignalVIEW software is designed to be used with SignalQuest’s SQ-SI, SI2X and SQ-XLD series products
- The easy to use, LabVIEW interface provides a real-time interface for the data acquisition system.
- Allows users to configure sampling parameters, view and analyze data, save waveforms, and export data values to a spreadsheet or text editor.

► Sampling and Logging

- This area provides the interface for capturing data from the SQ-SI, SI2X and SQ-XLD devices.
- Select effective sample rate, baud rate, and ports.
- Access additional tools to zoom, pan, and change history length.



SIGNALVIEW SOFTWARE BASIC

▶ Viewing Saved Data

- This area provides the interface for viewing and analyzing saved data
- Data values can be exported to a spreadsheet or text editor or saved as a waveform for future analysis.
- Access additional tools to zoom, pan, and change history length.

